



International Flying Fifteen Class

2017 New Zealand National Championship

And

21st Flying Fifteen World Championship

Incorporating

2017 International Classic Division Championship

And

2017 International Silver Division Championship

20th February to 3rd March 2017

Napier Sailing Club, Napier, New Zealand

Notice of Race

*The Organising Authority is the Napier Sailing Club Inc. (NSC)
63 West Quay, P.O. Box 12048, Napier 4144, New Zealand
in conjunction with
Flying Fifteen International (FFI).*

1 RULES

- 1.1 The regatta will be governed by the rules as defined in *The Racing Rules of Sailing*.
- 1.2 The Yachting New Zealand (YNZ) Prescriptions to rule 67, *Damages*, shall apply. Other YNZ Prescriptions shall only apply to the National Championship. Attachment A is a copy of the applicable parts of the YNZ Prescriptions.
- 1.3 The YNZ Safety Regulations Part 1 shall apply, except that Safety Regulations 2-12 shall not apply. Attachment B is a copy of the applicable parts of the YNZ Safety Regulations Part 1.
- 1.4 For the World and International Championships, the FFI Championship Regulations shall apply, except as changed by the Notice of Race and/or the Sailing Instructions.
- 1.5 For the National Championship, for protests where a rule of Part 2, *When Boats Meet*, or rule 31, *Touching a Mark*, is alleged to have been broken, an arbitration hearing may be offered prior to any formal protest hearing.

2 ADVERTISING

Boats may be required to display bow numbers and advertising chosen and supplied by the Organising Authority.



3 ELIGIBILITY AND ENTRY

- 3.1 The regatta is open to all boats of the International Flying Fifteen Class that comply with the class rules and whose owner(s) and helmspersons are current financial members of their National Class Associations.
- 3.2 The number of entries in the National Championship, including Classic and Silver Boats, is not limited.
- 3.3 The number of entries in the World Championship, including Classic and Silver Division Boats, is limited to 85 boats. Should entries exceed this number, FFI in its absolute discretion may vary this number, or make other provisions under the FFI Championship Regulations, after consultation with the Organising Authority.
- 3.4 Entry to the World Championship shall be in accordance with FFI Championship Regulation 7.1. The New Zealand National Championship is a qualifying event, and competitors wishing to qualify through this event shall enter for both the National Championship and the World Championship. In the event that a competitor does not then qualify to compete in the World Championship, they shall be refunded the balance of the fees paid less the entry fee for the National Championship.
- 3.5 Eligible boats may enter by completing the applicable attached contest entry form and sending it, together with the required fee, to the Napier Sailing Club, P. O. Box 12048, Napier 4144, New Zealand, or by emailing the contest entry form to manager@napiersailingclub.org.nz and depositing the required entry fee into the following bank account: 03 0698 0040708 26; and providing the following details: Particulars – FF Regatta; Code – Sail Number; and Reference – Helmsperson’s Surname.

Completed entries and fully paid entry fees must be received by Friday 25th November 2016.

- 3.6 Late entries, accompanied by the fully paid late entry fee may be accepted at the race committee’s discretion until 1700 hours on Friday 10th February 2017.
- 3.7 Classic Division Boats are those boats with sail numbers up to and including 2700, and in addition unmodified boats with sail numbers above 2700 that are derived from genuine classic moulds, but in all cases excluding those boats that have had substantial hull shell modifications. A definitive list of Classic Boats is published on the FFI website at www.flying15.org/the-flying-fifteen/boat-register/listing-of-classic-boats.
- 3.8 For the New Zealand National Championship, Silver Division Boats are those boats with sail numbers from 2701 to 3500, and in addition, those boats with sail numbers below 2701 that are not in the list of Classic Boats that is published on the FFI website.
- 3.9 For the International Championship, Silver Division Boats are those boats with sail numbers from 2701 to 3200, and in addition, those boats with sail numbers below 2701 that are not in the list of Classic Boats that is published on the FFI website.
- 3.10 Any question regarding Classic or Silver Division Boat classification will be referred for a decision to the Event Measurer, who shall be the FFI Chief Measurer or his appointed representative.

4 FEES

- 4.1 Required Entry Fees received by Friday 25th November 2016 are as follows:

New Zealand National Championship only:	All Divisions:	NZ\$250.00
21 st World Championship only:	All Divisions:	NZ\$350.00
Both Events (Nationals & Worlds):	Open/Silver Division:	NZ\$500.00
Both Events (Nationals & Worlds):	Classic Division:	NZ\$350.00



4.2 Late Entry Fees received after Friday 25th November 2016 are as follows:

New Zealand National Championship only:	All Divisions:	NZ\$300.00
21 st World Championship only:	All Divisions:	NZ\$400.00
Both Events (Nationals & Worlds):	Open/Silver Division:	NZ\$600.00
Both Events (Nationals & Worlds):	Classic Division:	NZ\$400.00

5 SCHEDULE

5.1 Registration, measurement and inspection:

Monday & Tuesday 20th & 21st February 2017 (Prior to the National Championship)

Saturday 25th February 2017 (Lay Day between the National and World Championships)

From 0900 to 1700 hours each day

5.2 Briefing:

National Championship: Wednesday 22nd February 2017 0900 hours

World Championship: Sunday 26th February 2017 0900 hours

5.3 Racing schedule:

National Championship: Wednesday 22nd to Friday 24th February 2017.

Up to 3 races per day, back to back.

World Championship: Sunday 26th February to Friday 3rd March 2017.

Up to 2 races per day, back to back.

5.4 Number of Races:

National Championship: 7 races are scheduled.

World Championship: 7 races are scheduled.

5.5 The scheduled time of the warning signal for the first race each day is 1100 hours, except for Friday 3rd March 2017 when the scheduled time of the warning signal for the first race is 1000 hours.

5.6 On Friday 24th February 2017, no warning signal will be made after 1630 hours.

On Friday 3rd March 2017, no warning signal will be made after 1530 hours.

6 MEASUREMENT

6.1 Each boat shall produce a valid measurement certificate prior to, or at registration.

6.2 Measurement will take place after registration.

6.3 Boats and all spars, sails and equipment shall be presented for measurement.

6.4 Measurement and safety checks may be made on a boat at any time during the Championships.

7 SAILING INSTRUCTIONS

The sailing instructions will be available at registration, from 0900 hours on Monday 20th February 2017, at the Napier Sailing Club, and may also be posted on the event website.

8 VENUE & RACING AREA

The venue is the Napier Sailing Club, West Quay, Ahuriri, Napier, New Zealand. The racing area is on the waters of Hawke Bay. Attachment C shows the venue and racing area.

9 THE COURSES

The courses to be sailed will be combinations of Triangle/Windward/Leeward legs and/or Windward/Leeward legs.

10 SCORING

10.1 One race is required to be completed to constitute a series.



- 10.2 (a) When fewer than 5 races have been completed, a boat's series score will be the total of her race scores. This changes rule A2, *Series Scores*.
 (b) When 5 or more races have been completed, a boat's series score will be the total of her race scores excluding her worst score.
- 10.3 For the National Championship, all boats shall be scored as a single fleet. When fewer than 5 races have been completed, Yachting New Zealand will not recognize the winners of the National Championship as New Zealand National Champions.
- 10.4 For the World Championship, all boats shall be scored as a single fleet.
- 10.5 For the International Championship for Classic Division Boats, eligible boats shall be scored as a separate fleet, using their results from the World Championship races, after all other non-Classic Division boats are excluded from the results.
- 10.6 For the International Championship for Silver Division Boats, eligible boats shall be scored as a separate fleet, using the results from the World Championship races, after all other non-Silver Division boats are excluded from the results.

11 PENALTY SYSTEM

- 11.1 For the National Championship, because it is a qualifying event for the World Championship, decisions of the protest committee will be final as provided in rule 70.5.
- 11.2 For the World and International Championships, an international jury will be appointed in accordance with rule 91(b). Decisions of the international jury will be final as provided in rule 70.5.

12 LAUNCHING

Unless otherwise directed by the Organising Authority, all competing boats and equipment shall be launched and retrieved from the Napier Sailing Club ramps.

13 RADIO COMMUNICATION

Except in an emergency, a boat shall neither make nor receive radio communications while *racing*. This restriction also applies to mobile telephones.

14 PRIZES

Prizes will be given as follows:

2017 New Zealand National Championship:

WILKIN-ANDERSON HALF MODEL (Half model)	National Champion
AIR NEW ZEALAND PLATE (Engraved salver)	2 nd overall
TE WHARAU TROPHY (Wooden waka)	3 rd overall
TAURANGA CLASSIC TROPHY (Unmodified pre-Sniffer (3079) hull moulds)	Champion Classic boat
TAURANGA TROPHY (Pre 3500 sail numbers)	Champion Silver boat
LEATHAM EDMOND MEMORIAL TROPHY (Presented by Anne Edmond)	First male/female crew
FLYING FIFTEEN TROPHY (Cup)	First all female crew
SPENCER SALVER (Helm not in first 3 places, presented by Martyn Spencer)	First Helm over 55 years
PINKIE'S POT (Average Points for Fleet)	Top Fleet
IMPROVERS TROPHY	Improvement during regatta



(Presented by Rowell Winters) TRUSTBANK HANDICAP CUP (Time corrected handicap scores)	Handicap winner
CRADDOCK CUP (Points difference between Nationals)	Improvement from previous year
SAM MASON MEMORIAL TROPHY (Sanders Cup Miniature)	Winner Invitation Race (or Race 1)

Other prizes may also be awarded.

2017 International Championship for Classic Division Boats:

KLAAS KNOP TROPHY (Wood carving of buffalo)	Champion Classic boat
THE CHIPPENDALE TROPHY (Half model)	2 nd overall
THE W.L. SHAND TROPHY (Half model)	3 rd overall
HONG KONG CLASSIC TANKARD (4-pint pewter tankard)	4 th overall
OPUA CLASSIC TROPHY (Kauri plaque)	5 th overall

Other prizes may also be awarded.

2017 International Championship for Silver Division Boats:

THE WINDEBANK TROPHY (Half model)	Champion Silver boat
HONG KONG SILVER SALVER (Silver salver)	2 nd overall
SOUTH OF PERTH YACHT CLUB TROPHY (Half model)	3 rd overall

Other prizes may also be awarded.

21st Flying Fifteen World Championship:

UFFA FOX TROPHY (Silver punch bowl)	World Champion helm
THE ARMADA DISH (Silver dish)	World Champion crew
TOM RATCLIFF TROPHY (Crystal & silver swans)	2 nd overall
WAFFA SALVER (Silver salver)	3 rd overall
NZFFA TROPHY (Kauri wood sculpture)	4 th overall
HONG KONG FLYING FIFTEEN ASSOCIATION TROPHY (Silver Chinese sailing junk)	5 th overall
ROYAL QUEENSLAND YACHT SQUADRON TROPHY (Model of FF rudder)	6 th overall
ESPERANCE BAY TROPHY (Hardwood box)	7 th overall
DIXON TROPHY (Silver rose bowl)	Winner 1 st race
KINSALE YACHT CLUB TROPHY (Waterford crystal bowl)	Winner 2 nd race
NAPIER SAILING CLUB TROPHY (Maori war canoe)	Winner 3 rd race



THE LOWESTOFT FIFTEEN (Model of FF)	Winner 4 th race
ROYAL HONG KONG YACHT CLUB TROPHY (Silver ice bucket)	Winner 5 th race
THE JACKDAW JUG (Silver jug)	Winner 6 th race
THE HAYLING ISLAND S.C. TROPHY (Silver wire FF)	Winner 7 th race
NATIONAL YACHT CLUB DUN LAOGHAIRE TROPHY (Silver cup)	Leading host nation boat
KELLETT ISLAND TROPHY (Silver dragon)	Leading overseas boat
LYMINGTON CUP (Silver cup on muskets)	Leading Helm over 60 years
CROZON-MORGAT TROPHY (Half model)	Leading Female Helm &/or Crew
COMMODORE'S TROPHY (Crystal bowl)	1st Non-qualifying Fleet (when sailed)

Other prizes may also be awarded.

15 **DISCLAIMER OF LIABILITY**

Competitors participate in the regatta entirely at their own risk. See rule 4, *Decision to Race*. The Organising Authority will not accept any liability for material damage or personal injury or death sustained in conjunction with or prior to, during, or after the regatta.

16 **INSURANCE**

Each participating boat shall be insured with valid third-party liability insurance with a minimum cover of NZ\$1,000,000 (or the equivalent) per incident.

17 **FURTHER INFORMATION**

For further information, please contact:

The Manager,
Napier Sailing Club,
P.O. Box 12048,
Napier 4144
New Zealand.
Phone: +64-6-835 3811
Email: manager@napiersailingclub.org.nz
Website: www.napiersailingclub.org.nz

Organising Committee Chair:
Graeme Robinson,
30 Simla Terrace,
Napier 4110,
New Zealand
Phone: +64-6-835 6240
Mobile: +64-27-240 5970
Email: gwrobinson@xtra.co.nz



Notice of Race Attachment A:

Yachting New Zealand Prescriptions, Applicable to the Championships:

- 40 Refer to Yachting New Zealand Safety Regulations of Sailing Appendix 4 (www.yachtingnz.org.nz – keyword “Safety Regulations”) for Yachting New Zealand additional requirements for personal buoyancy.
- 64.1 Yachting New Zealand prescribes that if a protest committee is satisfied that a breach of the Yachting New Zealand Safety Regulations of Sailing occurring after the preparatory signal, is inadvertent or accidental, it may impose a penalty less than disqualification.
- 67 Yachting New Zealand prescribes that:
1. The findings of fact, and decisions of protest committees, shall be relevant only for the purposes of World Sailing The Racing Rules of Sailing.
 2. Any issue of liability or claim for damages arising from an incident while a boat is bound by The Racing Rules of Sailing shall be subject to the jurisdiction of the courts and not considered by a protest committee.
 3. A boat that retires from a race, or accepts a penalty does not, by that action alone, admit liability.
- 75.2 Yachting New Zealand prescribes that:
1. Unless otherwise sanctioned by Yachting New Zealand, in National or New Zealand championships recognized by Yachting New Zealand, each crew member shall be a financial member of a club recognized by the boat’s national authority.
 2. For National Selection Trials recognized by Yachting New Zealand, each crew member shall be a financial member of a member club of Yachting New Zealand.



Notice of Race Attachment B:

Yachting New Zealand Safety Regulations Part 1, Applicable Provisions Only:

Unballasted Centreboard & Open Yachts, Sailboards and Ballasted Yachts not complying with Parts II – VI of the Yachting New Zealand Safety Regulations.

(for Parts II - VI see separate publication or www.yachtingnz.org.nz)

These Regulations are effective from 1st January, 2013.

Preamble

Part I applies to all racing centreboard yachts, open yachts and sailboards. Part I also applies to ballasted yachts not complying with Parts II – IV of the Yachting New Zealand Safety Regulations of Sailing when these yachts are racing on inshore waters, with appropriate rescue facilities provided by the Organising Authority, and when specific provision is made in the Sailing Instructions for ballasted yachts to race under this part of the Safety Regulations.

Skipper's Responsibility

The safety of a yacht and her crew is the sole and inescapable responsibility of the skipper who must do his/her best to ensure that the yacht is fully found, thoroughly seaworthy and manned by an experienced crew who are physically fit to face bad weather.

These Regulations are mandatory and failure to comply with them while racing will be grounds for disqualification following a protest, or other prescribed penalties as stated in the Sailing Instructions.

Individual Organising Authorities or class associations may require additional safety provisions in their Notice of Race and/or Sailing Instructions or class rules in view of local conditions.

Yachting New Zealand Safety Regulations Part 1

All Regulations are relevant whether or not yachts are racing. Yachting New Zealand recommends that these Regulations be observed by all centreboard and open yacht crews and boardsailors at all times.

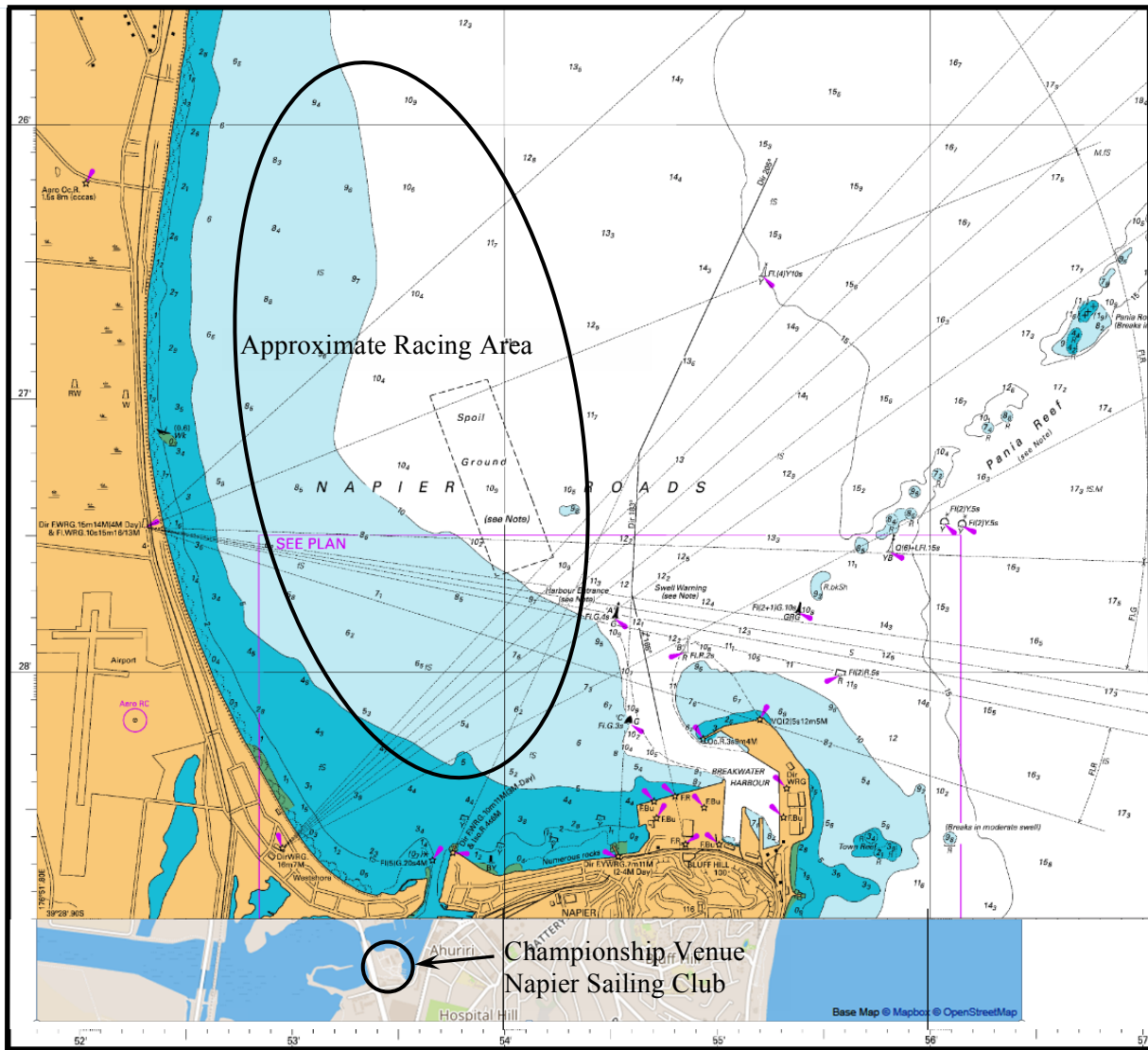
1. Crew members shall wear buoyancy vests or lifejackets in good repair properly secured about their persons and complying with YNZ minimum standard, SR Appendix 4 (YNZ Safety Regulations of Sailing), at all times while afloat. Yachting New Zealand may give dispensation (in writing), to specific classes or events, from this clause and specify conditions for exercising such dispensation. When dispensation is given it shall be the responsibility of the Organising Authority to ensure adequate safety provisions are made. Dispensation may always be overridden by RRS 40 or by the Notice of Race or Sailing Instructions.

Note: It is an offence under the Maritime Rules of the Maritime Transport Act for any vessel not to have on board an approved flotation device for each person.



Notice of Race Attachment C:

Venue, Napier Sailing Club & Approximate Racing Area, Hawke Bay, New Zealand:



Part Chart NZ 5612 Napier Roads: Napier Harbour
LINZ / New Zealand Hydrographic Authority

